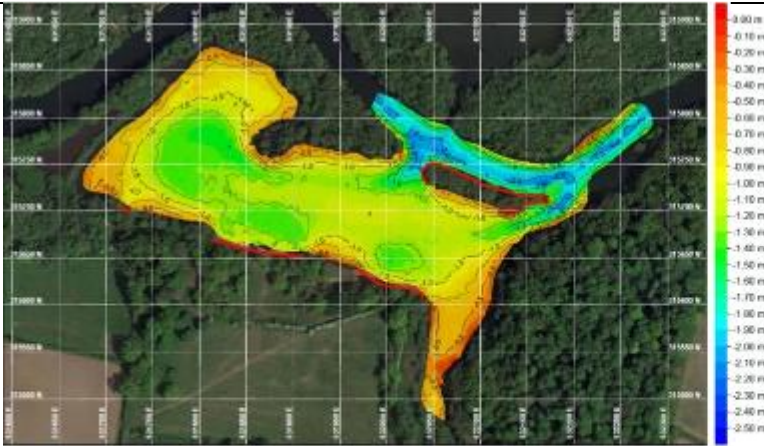


SURVEY



Project	:	Salhouse Broad Bathymetric Survey
Client	:	Land Owner
Date	:	November 2017
Keywords	:	Norfolk and Suffolk Broads • Bathymetry • Surveying • Sedimentation • Navigation • Tourism • Broads Authority • National Park
Description	:	<p>Salhouse Broad is a well-known and favoured destination for recreational boaters and tourists visiting the Norfolk and Suffolk Broads. Downstream along the River Bure from Wroxham, often referred to as “The Capital of the Broads”, Salhouse Broad receives high levels of boating traffic with visitors making use of the public areas along the southern bank.</p> <p>It is therefore important to monitor the silt levels within Salhouse and access channels for potential hazards to navigation and to inform potential maintenance dredging operations. The Norfolk and Suffolk Broads present a challenging environment in which to conduct bathymetric surveys due to a number of factors including, but not limited to: dense patches of aquatic vegetation, underwater obstacles (E.g. wrecks and fallen trees), signal obscuration from overhanging trees and shallow water depths across much of the National Park.</p> <p>Blessed with a sunny autumnal day, Exo Environmental performed a bathymetry survey, deploying a dual-frequency Echotrac CV100 echosounder. This equipment performed exceptionally well, successfully and accurately measuring depths as shallow as 0.3m, whilst differentiating between the hard, underlying geology and soft, accumulated surface silts. From mobilization to demobilisation, the survey took ~5 hours to complete, covered an area of ~75,000 m² and required 4 cups of coffee!</p>

